

# Heavy Duty Safety Switch with Pyle-National Interlocked Receptacle

## Type 12 and 3R Industrial

### Standards and Ratings

- UL Listed under file #E4776
- Meets UL98 for switches and UL 50 for enclosures
- Meets NEMA Standard KS-1 for enclosed switches
- Meets NEC wire bending space requirements
- Rated 10,000 AIC with Class H fuses or 200,000 AIC with Class R and J fuses
- I<sup>2</sup>t rated (Amps<sup>2</sup> x Seconds = 50,000)
- 12X overload current rating exceeds 10X industry standard

### Features

- Quick-make and break switching action
- Double break visible blade design
- Highly visible ON/OFF indication
- Rugged installer friendly enclosure design
- Modular design allows quick and easy replacement of parts
- Front removable lugs which can easily be converted to copper body or compression type lugs
- Defeatable dual cover interlock
- Insertion or removal of the plug is prevented by the interlock linkage while the switch is ON
- Receptacle prevents operation of the switch if an incorrect plug is inserted
- Accepts Pyle-National plug # JPD-116046-PR

### General Information

Catalog Number	Volts <sup>1</sup>	Description	Shipping Weight (lbs.)
<b>Type 12 Industrial <sup>2</sup></b>			
HF362JPN	600	3 Pole, 3 Wire, Fusible	28

### Horsepower Ratings <sup>3 4 5</sup>

Catalog Number	3 Phase, 240V AC		3 Phase, 480V AC		3 Phase, 600V AC	
	Std	Max	Std	Max	Std	Max
HF362JPN	7½	15	15	30	15	50
	—	—	—	—	—	—

### Mechanical Lug Wire Ranges (60/ 75°C, Cu/Al)

Description	Wire Range
Line, Load Neutral	#14-3 AWG (Cu/Al)
Ground <sup>6</sup>	#14-4 AWG

<sup>1</sup> Also rated 250V DC.

<sup>2</sup> Also rated 3R/3S for outdoor use.

<sup>3</sup> Horsepower ratings listed also apply to high efficiency motors with no derating.

<sup>4</sup> Dual horsepower ratings: Std - applies when non-time delay fuses are installed.

Max - applies when time-delay fuses are installed.

<sup>5</sup> Also rated 10HP at 250V DC.

<sup>6</sup> Load side of ground kit is wired to the 3 phase, 4 wire grounded type receptacle.

## Product Specification Sheet HD60.16

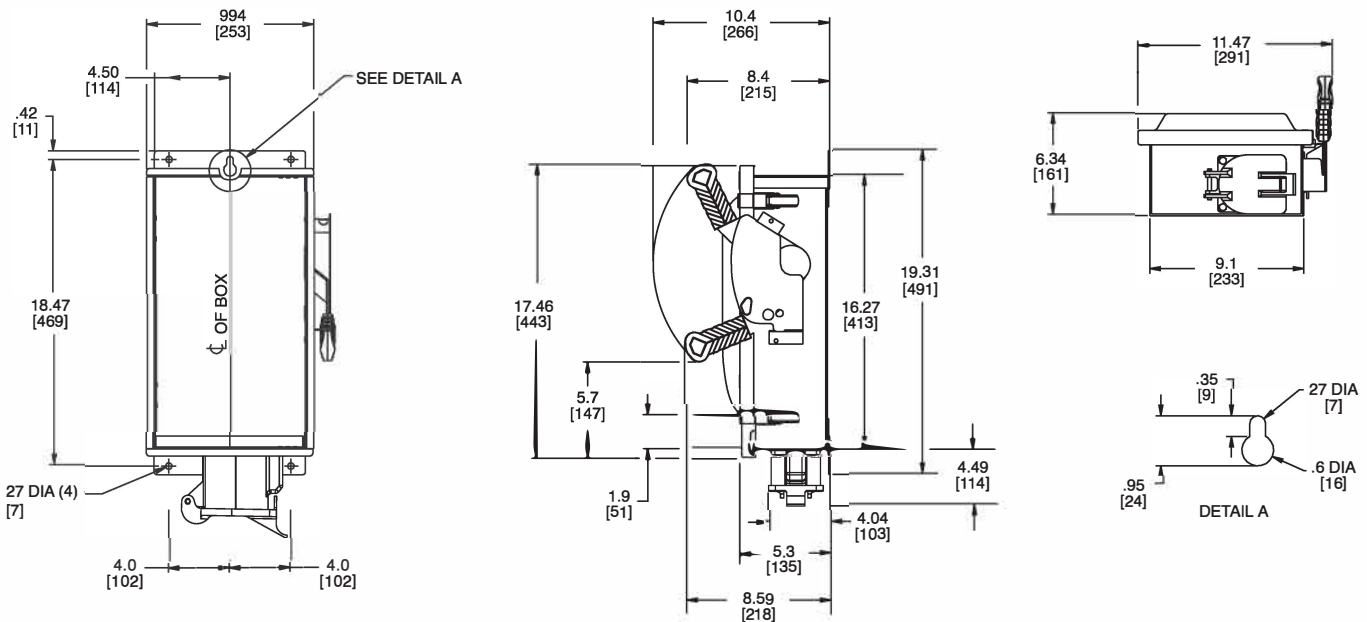
Answers for industry.

**SIEMENS**

# Product Specification Sheet #HD60.16 (page 2 of 2)

1

## Dimension Drawing



No knockouts in the enclosure.  
 Dimensions shown in inches and millimeters ( ).  
 Dimension shown accurate to  $\pm \frac{1}{16}$  inch.

	LINE SIDE WIRE BEND
600V Fused	3.54 (90)

Type 12 Enclosure: Galvanized Steel  
 .054 Thick (17 Gauge)  
 Finish: ANSI Grey #61 Paint

60A Pyle-National Receptacle  
 JRC-460-INT-12