

Distributed By:



Hillcrest Enterprises-CT, LLC
248 Kent Rd
New Milford, CT 06776 USA

Phone 804-798-8390

sales@hillcrestenterprises.com

RALCO 4 - WIRE

30A 600 VAC 250 VDC

FLAT BLADE

CIRCUIT BREAKING TYPE HEAVY DUTY

<p>RECEPTACLE</p> <p>PLUG</p> <p>3 POLE 4 WIRE 30 AMP 600 VAC 250 VDC STYLE 1 grounding thru housing Flat Blade Contacts CONFIGURATION DESIGNATOR NO. 321</p>	SURFACE MOUNT RECEPTACLES	
	<p>TYPE R RAINTIGHT With spring door cover</p> <p>CATALOG NO. 321-R</p>	<p>TYPE N WATERTIGHT With threaded cover and fully gasketed</p> <p>CATALOG NO. 321-N</p>

INTERIOR AND HOUSING

INTERIOR AND HOUSING WITH BACKBOX

<p>Interiors Only:</p> <p>Receptacles No. 321-I</p>	<p>CONDUIT BACKBOX</p>	<p>TYPE A</p>	Conduit		
			3/4"	321-RA-2	321-NA-2
			1"	321-RA-3	321-NA-3

PLUGS AND CONNECTORS

<p>Interiors Only: Plugs No. 321-PI</p>	PLUGS ONLY	
	<p>RAINTIGHT Plain Housing</p> <p>321-PR 321-PC 321-PK</p>	<p>WATERTIGHT With threaded nut and gasketed</p> <p>321-PN 321-PM 321-PG</p>

Cable connection - Form No. 5
Set of 3 Neoprene bushings furnished, range .625" to 1.000"

FOR REVERSE SERVICE DEVICES ADD SUFFIX R

<p>Interiors Only: Connectors No. 321-HI</p>	CONNECTORS ONLY	
	<p>RAINTIGHT Plain Housing</p> <p>321-HR 321-HC 321-HK</p>	<p>WATERTIGHT Threaded</p> <p>321-HN 321-HM 321-HG</p>

* Specify cable diameter

Distributed By:



Hillcrest Enterprises-CT, LLC
248 Kent Rd
New Milford, CT 06776 USA

Phone 804-798-8390

sales@hillcrestenterprises.com

RALCO 4 - WIRE

60A 600 VAC 250 VDC

FLAT BLADE

CIRCUIT BREAKING TYPE HEAVY DUTY

<p>RECEPTACLE</p> <p>PLUG</p> <p>3 POLE 4 WIRE 60 AMP 600 VAC 250 VDC STYLE 1 grounding thru housing Flat Blade Contacts CONFIGURATION DESIGNATOR NO. 322</p>	SURFACE MOUNT RECEPTACLES	
	<p>TYPE R RAINTIGHT With spring door cover</p> <p>CATALOG NO. 322-R</p>	<p>TYPE N WATERTIGHT With threaded cover and fully gasketed</p> <p>CATALOG NO. 322-N</p>
INTERIOR AND HOUSING		

INTERIOR AND HOUSING WITH BACKBOX					
<p>Interiors Only: Receptacles No. 322-I</p>	<p>CONDUIT BACKBOX</p>	<p>TYPE A</p>	<p>Conduit</p> <p>1 1/4"</p>	<p>322-RA-4</p>	<p>322-NA-4</p>
		<p>1 1/2"</p>	<p>322-RA-5</p>	<p>322-NA-5</p>	

PLUGS AND CONNECTORS

	PLUGS ONLY		
	<p>RAINTIGHT Plain Housing</p>	<p>WATERTIGHT With threaded nut and gasketed</p>	
<p>Interiors Only: Plugs No. 322-PI</p>	<p>With Neoprene Compression Bushing With Compression Bushing and Mechanical Clamp With Compression Bushing and Stainless Wire Mesh*</p>	<p>322-PR 322-PC 322-PK</p>	<p>322-PN 322-PM 322-PG</p>

Cable connection - Form No. 7Z
Set of 3 Neoprene bushings furnished, range .875" to 1.250"

FOR REVERSE SERVICE DEVICES ADD SUFFIX R

	CONNECTORS ONLY		
	<p>RAINTIGHT Plain Housing</p>	<p>WATERTIGHT Threaded</p>	
<p>Interiors Only: Connectors No. 322-HI</p>	<p>With Neoprene Compression Bushing With Compression Bushing and Mechanical Clamp With Compression Bushing and Stainless Wire Mesh*</p>	<p>322-HR 322-HC 322-HK</p>	<p>322-HN 322-HM 322-HG</p>

* Specify cable diameter

Distributed By:



Hillcrest Enterprises-CT, LLC
248 Kent Rd
New Milford, CT 06776 USA

Phone 804-798-8390

sales@hillcrestenterprises.com

RALCO 5 - WIRE

60A 600 VAC 250 VDC

FLAT BLADE

CIRCUIT BREAKING TYPE HEAVY DUTY

<p>RECEPTACLE</p> <p>PLUG</p> <p>4 POLE 5 WIRE 60 AMP 600 VAC 250 VDC STYLE 1 grounding thru housing Flat Blade Contacts CONFIGURATION DESIGNATOR NO. 422</p>	SURFACE MOUNT RECEPTACLES	
	<p>TYPE R RAINTIGHT With spring door cover</p> <p>CATALOG NO. 422-R</p>	<p>TYPE N WATERTIGHT With threaded cover and fully gasketed</p> <p>CATALOG NO. 422-N</p>
INTERIOR AND HOUSING		

INTERIOR AND HOUSING WITH BACKBOX					
<p>Interiors Only: Receptacles No. 422-I</p>	<p>CONDUIT BACKBOX</p>	<p>TYPE A</p>	Conduit		
		<p>1 1/4"</p>	<p>422-RA-4</p>	<p>422-NA-4</p>	
			<p>1 1/2"</p>	<p>422-RA-5</p>	<p>422-NA-5</p>

PLUGS AND CONNECTORS			
	PLUGS ONLY		
	<p>RAINTIGHT Plain Housing</p>	<p>WATERTIGHT With threaded nut and gasketed</p>	
<p>Interiors Only: Plugs No. 422-PI</p>		<p>422-PR</p>	<p>422-PN</p>
<p>With Neoprene Compression Bushing</p>		<p>422-PC</p>	<p>422-PM</p>
<p>With Compression Bushing and Mechanical Clamp</p>		<p>422-PK</p>	<p>422-PG</p>
<p>With Compression Bushing and Stainless Wire Mesh*</p>			

Cable connection - Form No. 7Z
Set of 3 Neoprene bushings furnished, range .875" to 1.250"

FOR REVERSE SERVICE DEVICES ADD SUFFIX R

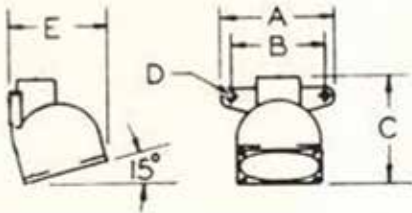
	CONNECTORS ONLY		
	<p>RAINTIGHT Plain Housing</p>	<p>WATERTIGHT Threaded</p>	
<p>Interiors Only: Connectors No. 422-HI</p>		<p>422-HR</p>	<p>422-HN</p>
<p>With Neoprene Compression Bushing</p>		<p>422-HC</p>	<p>422-HM</p>
<p>With Compression Bushing and Mechanical Clamp</p>		<p>422-HK</p>	<p>422-HG</p>
<p>With Compression Bushing and Stainless Wire Mesh*</p>			

* Specify cable diameter



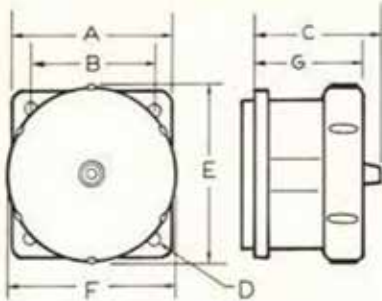
DIMENSIONAL DATA

TYPE A — ANGLE BOX, SINGLE VERTICAL ENTRANCE



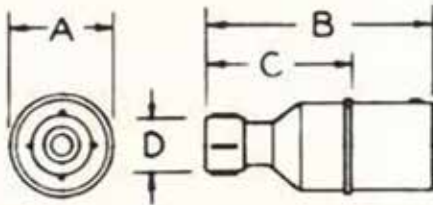
Series	A	B	C	D	E
321	3 $\frac{3}{8}$	2 $\frac{3}{8}$	3 $\frac{1}{8}$	1 $\frac{1}{2}$	3 $\frac{1}{2}$
322, 422	5 $\frac{1}{8}$	3 $\frac{3}{32}$	4 $\frac{1}{8}$	$\frac{3}{8}$	4 $\frac{5}{8}$

TYPE N — WATERTIGHT RECEPTACLE HOUSING WITH THREADED COVER



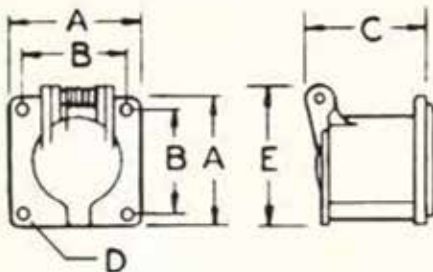
Series	A	B	C	D	E	F	G
321	3 $\frac{3}{32}$	2 $\frac{1}{32}$	2 $\frac{1}{8}$	$\frac{3}{32}$	3 $\frac{3}{8}$	3 $\frac{3}{8}$	2 $\frac{1}{8}$
322	4 $\frac{3}{8}$	3 $\frac{1}{32}$	3 $\frac{3}{8}$	$\frac{3}{8}$	4 $\frac{3}{8}$	4 $\frac{1}{8}$	3 $\frac{1}{8}$
422	4 $\frac{3}{8}$	3 $\frac{1}{32}$	3 $\frac{1}{2}$	$\frac{3}{8}$	4 $\frac{3}{8}$	4 $\frac{3}{8}$	3

TYPE PR — PLUG HOUSING, PLAIN



Series	A	B	C	FORM NO.	D
321	2 $\frac{1}{16}$	5 $\frac{1}{4}$	3 $\frac{3}{8}$	4	1 $\frac{1}{2}$
322	3 $\frac{3}{8}$	6 $\frac{3}{4}$	4 $\frac{1}{4}$	5	2 $\frac{3}{8}$
422	3 $\frac{3}{8}$	6 $\frac{3}{8}$	4 $\frac{1}{2}$	5	2 $\frac{3}{8}$

TYPE R — RAIN-TIGHT RECEPTACLE HOUSING WITH SPRING DOOR



Series	A	B	C	D	E
321	3 $\frac{3}{32}$	2 $\frac{1}{32}$	2 $\frac{3}{8}$	$\frac{3}{32}$	4 $\frac{3}{8}$
322	4 $\frac{3}{8}$	3 $\frac{1}{32}$	3 $\frac{3}{8}$	$\frac{3}{8}$	5 $\frac{1}{4}$
422	4 $\frac{3}{8}$	3 $\frac{1}{32}$	3 $\frac{3}{8}$	$\frac{3}{8}$	5 $\frac{3}{8}$